



SHIJIAZHUANG CHENGEN TRADING CO., LTD

Email: sales@chengsenchina.com
TEL NO.: 0086 31180850577
MOB: 0086 13933063204
FAX: 0086 311 85867868
Website: www.hebeimetal.cn
www.chengsenchina.com
EXPORT PROFESSIONAL

石家庄成森贸易有限公司
SHIJIAZHUANG CHENGEN TRADING CO.,LTD

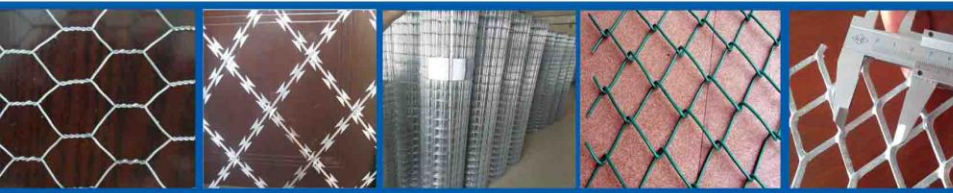
Who We Are >>>

CHENGSEN have 18 years export experiences, 25 years production experiences. 95% repeat orders, Alibaba 5 years Golden Supplier after so many years accumulation of industry and international trade practice, since then, we have achieved fast growth by expanding supply range, customer base and sourcing power continuously.

In 2019, we have sold about 200,000 tons of various steel products to world market, say Gulf region (GCC), Caribbean nations, West and East Africa, Latin America, and Asia, and has been ranked within the top 100 trading company in HEBEI province.

Within our customers, we keep long term relationship with below esteemed international traders for sales of steel and other relevant products, especially in Europe, Caribbean nations, Latin America, West and East Africa, south east Asia.

At present, we have two departments to handling steel items and wire mesh items:



Wire Mesh Department Supply >>>

We are real factory to produce Hexagonal Gabion, Razor wire, barbed wire, Grating etc to produce other kinds of wire meshes, which keeps competitive prices than others.

- Hexagonal Gabion, Reno Mattress, Aperture: 60x80mm, 80x100mm, 100x120mm etc, Size customized
- Hexagonal wire mesh: 3/8", 1/2", 5/8", 3/4", 1", 1-1/2", 2", 3", 4", Wire Dia: 0.8mm-2mm, Width: 0.5-2m
- Razor wire: BTO10, BTO12, BTO18, BTO22, BTO28, BTO30, CBT60, CBT65, Coil Dia: 450mm, 500mm, 700mm, 900mm
- Barbed wire: Gauge: BWG12, BWG14, BWG16, Barbed wire space: 3"-6" (76mm-152mm)
- Mild steel galvanized serrated Grating 25mm, 30mm, 32mm, 38mm, 40mm, 50mm, Aperture & Size Customized.
- Stainless steel wire mesh 201 202, 304, 316, 316L, Width: 0.6m-8m, Mesh: 3mesh - 400mesh, Aperture: 6.27-0.0385mm
- Chain link fencing (galvanized and PVC coated): 50x50mm, 60x60mm etc, Wire Dia: 1.8mm-3mm, Width: 0.5m-3m, Length: 10-25m
- Welded wire mesh (galvanized and PVC coated): 1/8", 1/4", 1/2", 3/4", 1", 2", 3", 4", 6" etc, Width: 3', 4', 5', 6', Length: 100ft etc
- Square wire mesh: 2x2mesh, 3x3mesh, 4x4mesh, 5x5mesh, 6x6mesh, 8x8mesh, 10x10mesh, 12x12mesh, 20x20mesh, 30x30mesh etc
- Customized Decorative perforated metal mesh, Decorative expanded metal mesh, Decorative curtain as requested.
- Other wire mesh products including Reinforcing concrete mesh, Rib lath, HY rib Lath, Aluminium corner bead, fiberglass mesh etc

Customer Photo >>>



2017 Yangon Fair



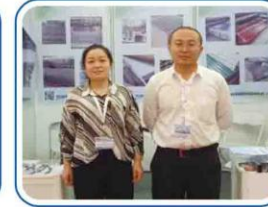
2017 in Myanmar



2017 Myanmar exhibition



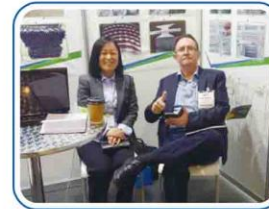
2018 in australia



2017 Myanmar exhibition



2018 Australia Exhibition



2018 in Australia Exhibition



2018 AUS



2018 Australia customer visit us



2018 缅甸 myan



2019 Thailand



2019 Myanmar customer visit

Gabion Basket >>>

1. **Materials:** hot dipped galvanized wire and PVC coated galvanized wire
2. **Mesh wire:** 2.0mm, 2.4mm, 2.7mm, 3.2mm, 3.4mm, 4mm
3. **Selvedge wire diameter:** 2.4mm, 2.7mm, 3mm, 3.4mm, 4mm
4. **Mesh hole:** 6*8cm, 8*10cm, 10*12cm, 12*15cm
5. **Tie wire/lacing wire:** 2.2mm
6. **Zinc coating:** 220–290g/m²
7. **Size:** 2x1x1m, 2x1x0.5m, 6x2x0.3m, as customer request

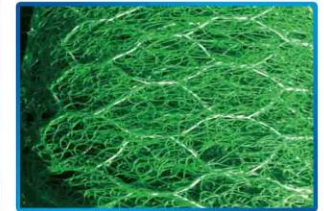


River Gabion Mattresses >>>

Gabion Mattress can be made of hexagonal double-twisted mild steel wire mesh. Mattresses can be supplied in various length, widths and heights. The tolerance of mattresses' dimensions are $\pm 3\%$ in length, $\pm 3\%$ in width and $\pm 2.5\text{cm}$ in height. In order to strengthen the mattresses, all the edges of the mattress are selvedged with a wire of greater diameter.



Reinforced Mike Mat >>>



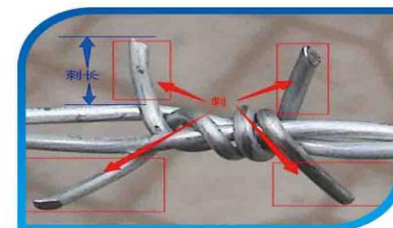
Razor Wire >>>

Type	Blade Shape	Blade Thickness	Core Wire Diameter	Blade Length	Blade Width	Blade Space
BTO-10		0.5±0.05	2.5±0.1	10±1	13±1	26±1
BTO-12		0.5±0.05	2.5±0.1	12±1	15±1	26±1
BTO-18		0.5±0.05	2.5±0.1	18±1	15±1	33±1
BTO-22		0.5±0.05	2.5±0.1	22±1	15±1	34±1
BTO-28		0.5±0.05	2.5±0.1	28±1	15±1	45±1
BTO-30		0.5±0.05	2.5±0.1	30±1	18±1	45±1
CBT-60		0.5±0.05	2.5±0.1	60±1	32±1	100±2
CBT-65		0.6±0.05	2.5±0.1	65±1	21±1	100±2



Barbed Wire >>>

Suitable for agriculture farm, animal husbandry, plantation or fence, manufactured using high quality low carbon steel wire in galvanized or pvc coated or plastic coated.



Specification >>>

Barbed wire Specification				
Name	Barbed wire Guage (BWG)		Barbed wire space(cm)	Barbed distance(cm)
Hot dipped galvanized barbed wire	10# x 12#		7.5-15	1.5-3
	12# x 12#			
12# x 14#				
14# x 14#				
14# x 16#				
16# x 16#				
16# x 18#				
PVC Barbed wire	Before painting	After painting	7.5-15	1.5-3
PE Barbed wire	1.0mm-3.5mm	1.4mm-4.0mm		
	BWG11#-20#	BWG8#-17#		
	SWG11#-20#	SWG8#-17#		
Painting thickness for PVC & PE 0.4mm-0.6mm				

Stainless Steel Filter Disc & Filter Cartridge >>>

Product name	20 50 100 1000 micron rimmed 316 stainless steel wire mesh filter disc
Common material	304 316 stainless steel
Out diameter	5-600mm
Mesh counts	Plain:1-635 mesh
layers	1 layer ,multi-layers
Sample	Free and available
Shape	Round,square,rectangular,circular,cap,waist,oval etc
Technique	Woven wire mesh



Stainless Steel Wire Mesh >>>

Materials: 200, 202, 302, 304, 304L, 316, 316L

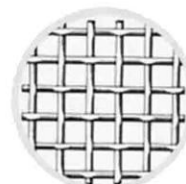
Weaving and characteristics: plain weave, twilled seave, dutch weave, stainless wire mesh have the characteristics of heat-resisting,acid-resisting, wear-resisting, corrosion-resisting.

Uses:It is used in mine,petroleum,chemical Industry,food industry,medicine, achine-making etc

Width: 0.3m-8m Length: 30m/50m mesh:3-400mesh

Specification >>>

Mesh Inch	S. W. G	Aperture (mm)	Wire Diameter (mm)	Effective (%)	Weight (Kg/m2)
3mesh	14	6.27	2.2	62	7
5mesh	22	4.36	0.711	76	1.3
6mesh	22	3.52	0.711	63	1.6
8mesh	24	2.5	0.559	67	1.5
10mesh	26	2.08	0.46	67	1.1
12mesh	26	1.74	0.457	68	1.4
14mesh	26	1.36	0.46	57	1.4
16mesh	28	1.21	0.376	55	1.2
18mesh	30	1.1	0.315	60	0.85
20mesh	30	0.95	0.315	58	0.95
24mesh	32	0.78	0.274	55	0.85
26mesh	32	0.74	0.274	51	0.7
28mesh	34	0.67	0.234	50	0.75
32mesh	34	0.56	0.234	50	0.84
36mesh	34	0.47	0.234	45	0.95
40mesh	36	0.44	0.193	50	0.8
50mesh	38	0.36	0.152	46	0.58
60mesh	40	0.3	0.122	50	0.45
80mesh	40	0.198	0.12	44	0.58
100mesh	42	0.154	0.1	37	0.5
120mesh	44	0.13	0.081	40	0.39
160mesh	46	0.097	0.61	32	0.3
170mesh	47	0.09	0.05	41	0.213



PLAIN



DUTCH



TWILLED



TWILLED DUTCH

Welded Wire Mesh Roll >>>

Specification List of Welded Wire Mesh Roll:		
Opening		Wire Diameter<BWG>
In Inch	In Metric Unit(mm)	
1/4 x 1/4	6.4mm x 6.4mm	22,23,24
3/8 x 3/8	10.6mm x 10.6mm	19,20,21,22
1/2 x 1/2	12.7mm x 12.7mm	16,17,18,19,20,21,22,23
5/8 x 5/8	16mm x 16mm	18,19,20,21,
3/4 x 3/4	19.1mm x 19.1mm	16,17,18,19,20,21
1 x 1/2	25.4mm x 12.7mm	16,17,18,19,20,21
1-1/2 x 1-1/2	38mm x 38mm	14,15,16,17,18,19
1 x 2	25.4mm x 50.8mm	14,15,16
2 x 2	50.8mm x 50.8mm	12,13,14,15,16
Technical Note:		
1.Standard roll length: 30m;width: 0.5m to 1.8m		
2.Special sizes available at request		
3.Packing: in waterproof paper in rolls. Custom packing available at request.		
PVC Coated Welded Mesh:		
Opening		Wire Diameter<BWG>
In inch	In Metric Unit(mm)	
1/2 x 1/2	12.7mm x 12.7mm	16,17,18,19,20,21
3/4 x 3/4	19mm x 19mm	16,17,18,19,20,21
1 x 1	25.4mm x 25.4mm	15,16,17,18,19,20
Technical Note:		
1.Standard roll length: 30m;width: 0.5m to 1.2m		
2.Special sizes available at request		
3.Packing: in waterproof paper in rolls. Custom packing available at request.		

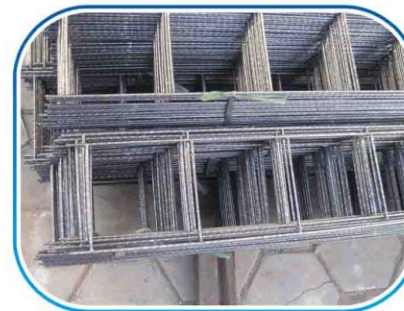


Welded Wire Mesh Sheet >>>

Welded Wire Sheet		
Opening		Wire Diameter
In Inch	In Metric Unite	
1" x 1" 2" x 2"	50mm*50mm	1.5,1.6,1.7,1.8mm
1" x 1"	25mm*25mm	2.5,3,2,4,0mm
2" x 2"	50mm*50mm	2.5,3,2,4,0,6,0mm
4" x 4"	100mm*100mm	3,0,4,0,6,0mm



Welded Brick Mesh >>>



Chain Link Fence >>>

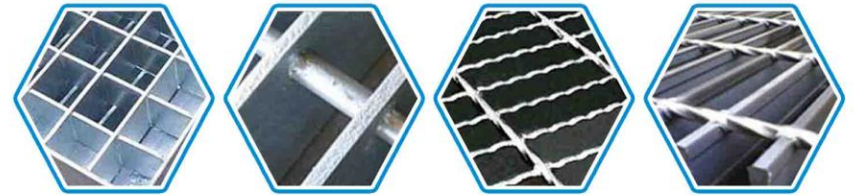
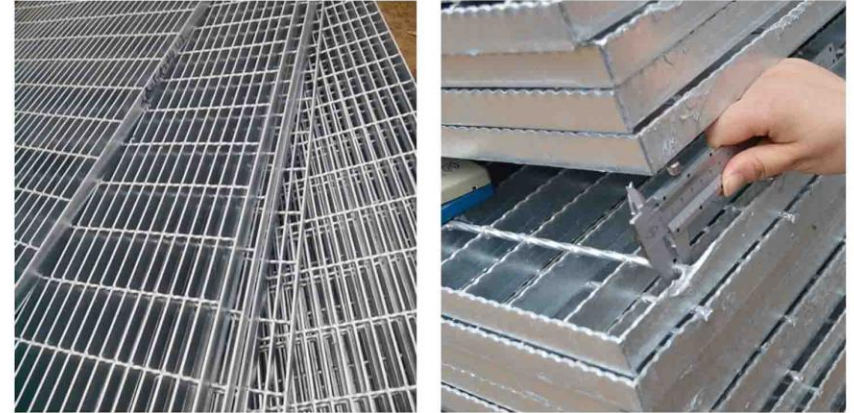
Chain link fence products with good elasticity, high strength, convenient transportation, the construction characteristics of the flexible, and therefore is widely used in sports venues, animal breeding, plant quarantine and protective engineering etc.



Material	PVC wire, high quality low carbon steel wire, galvanized wire, etc.		
surface treatment	hot dipped galvanized, electric galvanized, PVC coated, PE etc.		
wire distance	2-5mm		
Aperture	40x40mm, 50x50mm, 60x60mm, 70x70mm, 80x80mm, 100x100mm,		
Length	10-20m		
Width	0.5-2.5m		
Dimension of PVC Coated Chain Link Mesh			
Mesh Size	Wire Diameter	Width	Length
40mmx40mm	2.8mm-3.8mm	0.5m-4.0m	5m-25m
50mmx50mm	3.0mm-5.0mm	0.5m-4.0m	5m-25m
60mmx60mm	3.0mm-5.0mm	0.5m-4.0m	5m-25m
80mmx80mm	3.0mm-5.0mm	0.5m-4.0m	5m-25m
100mmx100mm	3.0mm-5.0mm	0.5m-4.0m	5m-25m
Surface Treatment			
Surface treatment	Min Zinc	Max Zinc	
Electro Galvanized	15g/ m2	25g/ m2	
Hot dip galvanized	60/ m2	340/ m2	
PVC/PE Coated	400microns	1000microns	

1. Material: Galvanized iron wire or PVC coated iron wire.
2. Surface treatment: PVC coated, PVC sprayed, electric galvanized, hot dipped galvanized.
3. Weave characteristics: Woven diamond pattern provides strong, durable and flexible construction.

Steel Grating >>>



Specification >>>

Common Specification of Steel Grating	
Remarks: Special Material, Special High Zinc Coating and New Style can be Customized.	
Material Standard	ASTM A36, A1011, A569, Q235, S275JR, Stainless steel 304/316, Mild steel & Low carbon steel, etc
Bearing Bar	25x3, 25x4, 25x4.5, 25x5, 30x3, 30x4, 30x4.5, 30x5, 32x5, 40x5, 50x5, 65x5, 75x6, 75x10...100 x10mm etc;
(Width x Thickness)	I bar: 25x5x3, 30x5x3, 32x5x3, 40x5x3 etc
	US standard: 1"x3/16", 1 1/4"x3/16", 1 1/2"x3/16", 1"x1/4", 1 1/4"x1/4", 1 1/2"x1/4", 1"x1/8", 1 1/4"x1/8", 1 1/2"x1/8" etc
Bearing Bar Pitch	12.5, 15, 20, 23.85, 25, 30, 30.16, 30.3, 32.5, 34.3, 35, 38.1, 40, 41.25, 60, 80mm etc.
	US standard: 19-w-4, 15-w-4, 11-w-4, 19-w-2, 15-w-2 etc.
Twisted Cross Bar Pitch	38.1, 50, 60, 76, 80, 100, 101.6, 120mm, 2" & 4" etc
Surface Treatment	Untreated(black), Hot-dipped galvanized, Powder coated, Electroplate, Painting or as per customers' requirement.
Grating Style	Plain / Smooth, Serrated / Teeth, I bar, Serrated I bar

Square Wire Mesh >>>

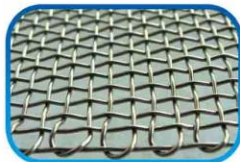
- 1、Material: Galvanized iron wire, or stainless steel wire
- 2、Surface treatment: Electro galvanized or hot dipped galvanized
- 3、Application: Used in industries and constructions to sieve grain powder, filter liquid and gas, safety guards on machinery enclosure, wood strips in making wall and ceiling

It can be used as safety guards on machinery, sand mesh, construction walls and ceilings, poultry fence and all kinds of sieves etc.

Assortment available: Galvanized before weaving & Galvanized after weaving.

Specification >>>

Wire diameter (mm)	Aperture(mm)	Wire diameter(mm)	Aperture(mm)
22	200	4	15
20	180	3.2	30
16	150	3	30
16	120	3.2	25
12	100	3	25
12	90	2.6	30
12	80	2.5	30
12	75	2.6	25
12	70	2.5	25
10	60	2.6	20
10	50	2.5	20
9	45	2	25
8	40	1.9	25
7.5	38	2	20
7	37.5	1.9	20
7	35	2	18
7	32.5	1.9	18
6.5	32	2	15
6	30	1.9	15
6	27.5	2	12
6	25	1.9	12
6	20	2	10
5	25	1.9	10
5	22.5	1.6	15
5	20	1.5	15
4.5	22	1.6	12
4.5	17.5	1.5	12
4.5	15	1.6	10
4	20	1.5	10



Expanded Metal Mesh >>>

Specifications:

Material: carbon steel, stainless steel plate, galvanized plate, titanium plate, copper and so on.

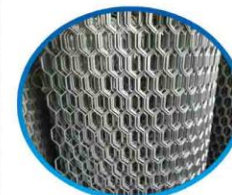
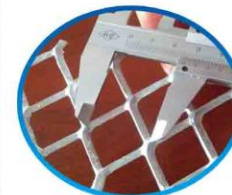
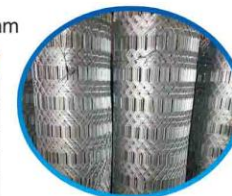
Thickness: 0.5mm-15.0mm

Width: ≤3500mm

Length: Less than or equal to 20000mm

LWD: 25mm-500mm

Thickness(mm)	SWD(mm)	LWD(mm)	wire stems width (mm)	Width(m)	Length(m)	Weight (kg/m ²)
0.5	2.5	4.5	0.5	0.5	1	1.8
0.5	10	25	0.5	0.6	2	0.73
0.6	10	25	1	0.6	2	1
0.8	10	25	1	0.6	2	1.25
1	10	25	1.1	0.6	2	1.77
1	15	40	1.5	2	4	1.85
1.2	10	25	1.1	2	4	2.21
1.2	15	40	1.5	2	4	2.3
1.5	15	40	1.5	1.8	4	2.77
1.5	23	60	2.6	2	3.6	2.77
2	18	50	2.1	2	4	3.69
2	22	60	2.6	2	4	3.69
3	40	80	3.8	2	4	5.00
4	50	100	4	2	2	11.15
4	60	120	4	2	7.5	4.0
4	80	180	4	2	10	3.0
4	100	200	4	2	12	2.5
4.5	50	100	5	2	2.7	11.15
5	50	100	5	1.4	2.6	12.39
5	75	150	5	2	10	3.0
6	50	100	6	2	2.5	17.35
8	50	100	8	2	2.1	28.26



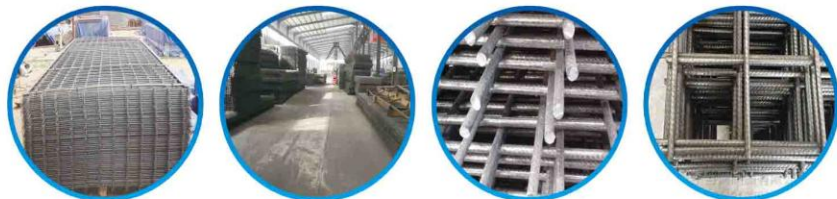
Expanded Brick Mesh >>>



Reinforcing Mesh >>>

1.Reinforcing mesh panel size is 2.4 x 6m (for Australia standard) SL62
Material: 1)Cold-rolled steel ribbed rebar 2)Cold-rolled steel round rebar
3)Hot-rolled steel ribbed rebar

2.Reinforcing mesh panel size is 2.4 x 6m (for Australia standard) SL62Features:
Steel bar grating costs less time and labor in work. It saves about 50 to 70 percent work time compared with common binding wire mesh. The use orbar grating can also strengthen the concrete parts to reduce surface breaking ratio. Welded bar grating for reinforcement is especially suitable for big area concrete engineering. Using of welded bar reinforcement can save about 10 percent of the total cost of the project.



AS/NZS 4671:2001 Australia/New Zealand Standard (SIZE:6000mm*2400mm)					
Ref No.	Std Unit	Longitudinal Wires mm	Edge Wires mm	Cross Wires mm	Mass Kg
SL81(F81)	Sheet	7.6 @ 100	7.60 @ 100	7.60 @ 100	105
SL102(F102)	Sheet	9.5 @ 200	6.75 @ 100	6.75 @ 100	80
SL92(F92)	Sheet	8.6 @ 200	6 @ 100	8.6 @ 200	66
SL82(F82)	Sheet	7.6 @ 200	5.37 @ 100	7.6 @ 200	52
SL72(F72)	Sheet	6.75 @ 200	4.77 @ 100	6.75 @ 200	41
SL62(F62)	Sheet	6 @ 200	4.77 @ 100	6 @ 200	33
SL52(F52)	Sheet	4.77 @ 200	4.77 @ 100	4.77 @ 200	21

DIN488 GERMAN STANDARDS (SIZE : 2150mm*5000mm)						
Ref No.	Std Unit	Longitudinal Wires mm	Cross Wires mm	Pitch of wire	Mass Kg	Mass Kg/m2
Q131	Sheet	5.0	5.0	150 @ 150	22.476	2.091
Q188	Sheet	6.0	6.0	150 @ 150	32.401	3.014
Q221	Sheet	6.5/5.0	6.5	150 @ 150	3.707	3.136
Q295	Sheet	7.5/5.5	7.5	150 @ 150	44.245	4.116
Q378	Sheet	8.5/6	8.5	150 @ 150	66.659	5.157

BS4483 BRITISH STANDARD						
Ref No.	Std Unit	Longitudinal Wires mm	Cross Wires mm	Pitch of wire	No. of sheet per ton	Mass Kg/m2
A393	Sheet	10	10	200 @ 200	15	6.16
A252	Sheet	8	8	200 @ 200	22	3.95
A193	Sheet	7	7	200 @ 200	29	3.02
A142	Sheet	6	6	200 @ 200	40	2.22
A98	Sheet	5	5	200 @ 200	57	1.54

HY-Rib Lath >>>

HY-Rib Lath is manufactured from hot-dipped galvanized steel sheets, Because its meshes and U patterns, it has better anti-stress capability and forming, Flexibility than normal metal lath.This product has excellent engineering quality,construction security and widely used in tunnels bridges, walve basement systems, sewage systems, subways,retaining walls, nuclear power plants, shi-yards, water pools and marine engineering works and high rise building projects and non-regular or bending pattern etc. As concrete permanent assembly-free formwork.

Material	Thickness(mm)	width(mm)	length(mm)	measurement(m2)
bright sheet	0.1	450	2000	0.9
bright sheet	0.13	450	2000	0.9
bright sheet	0.15	450	2000	0.9
Electro galvanizing	0.1	450	2000	0.9
Electro galvanizing	0.13	450	2000	0.9
Electro galvanizing	0.15	450	2000	0.9
hot galvanizing	0.16	450	2000	0.9
hot galvanizing	0.2	450	2000	0.9
hot galvanizing	0.23	450	2000	0.9
hot galvanizing	0.25	450	2000	0.9
hot galvanizing	0.3	450	2000	0.9
hot galvanizing	0.35	450	2000	0.9



Rib Lath >>>

The expanded metal otter band has the reinforced tension strength of model. Longitudinal reinforcement makes massive the coat of depth haveven paint depth.

Extensive application is in wall and the hanging of the plaster of the ceiling and the archtural constructing base plastering.

Frequently ready length:2M-3M Pass:5*11mm,10*20mm,8*12mm,7*20mm,7*15mm
Plate thickness:0.3-0.5mm Tendons high:5mm/9mm Reinforcement distance:75mm/150mm
Width:600mm/900mm

thickness(mm)	mesh(mm)	Rib height(mm)	Rib distance(mm)	kg/m²	Width of panel(mm)
0.3	16X11	8	150	0.85	600
0.35	16X11	8	150	1	600
0.4	16X11	8	150	1.14	600
Thickness of panel(mm)	mesh(mm)	Rib height(mm)	Rib distance(mm)	kg/m²	Width of panel(mm)
0.3	7X11	8	100	1.165	600
0.35	7X11	8	100	1.36	600
0.4	7X11	8	100	1.55	600



Field Fence >>>

1. Ferlo prairie fence netting was weaved with high strength galvanized steel wire, the intensity is high, the pulling force is big. It can stand the violent impact from the cow, horse and sheep, safe and reliable.
2. Stee wire, the surface of profile link is galvanized, other components adopt rust-resisting and corrosion-resisting. It can stand and bad working conditions, the service life can reach to 20 years.
3. The latitude parallel adopt the craft of rolling, it strengthened the elasticity and cushion function, it can stand the distortion of contraction and hotly rise. The mesh fence netting keep and condition of rise tightly.
4. The structure is simple, maintains conveniently, the construction cycle is short, the volume is small, light, easy to transport and install, ventilates disphanous, it doesn't affect the landform.

No.	type	Specification	Weight(kg)	Top and bottom wire Dia. (mm)	Body wire(mm)
1	7/150/813/50	102+114+127+140+152+178	19.3	2.5	2
2	8/150/813/50	89(75)+89+102+114+127+140+152	20.8	2.5	2
3	8/150/902/50	89+102+114+127+140+152+178	21.6	2.5	2
4	8/150/1016/50	102+114+127+140+152+178+203	22.6	2.5	2
5	8/150/1143/50	114+127+140+152+178+203+229	23.6	2.5	2
6	9/150/991/50	89(75)+89+102+114+127+140+152+178	23.9	2.5	2
7	9/150/1245/50	102+114+127+140+152+178+203+229	26	2.5	2
8	10/150/1194/50	89(75)+89+102+114+127+140+152+178+203	27.3	2.5	2
9	10/150/1334/50	89+102+114+127+140+152+178+203+229	28.4	2.5	2
10	11/150/1422/50	89(75)+89+102+114+127+140+152+178+203+229	30.8	2.5	2

Note: The first data in type is the No. of line wire; The second data is the horizontal hole size(mm); The third data is the height of the fence(mm); The fourth data is the total length of the fence(mm).



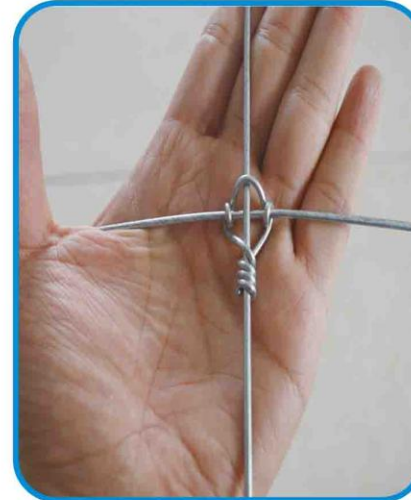
Deer Fence >>>

The fixed knot fence is a wire-type woven wire mesh fence with high-strength carbon steel wire. The solid structure fence adopts a solid lock structure, which is mainly used for the wild outer fence to protect deer, horse, cow, sheep, goat and other cattle. Prairie fences and farm fences. It can be installed quickly and with fewer fences. This means that fixed knots reduce costs and reduce maintenance compared to other wire constructions.

1. Materials: High-strength galvanized iron wire; High-strength zinc plated steel
2. Surface treatment: Class A: Electro galvanized fixed knot joint fencing(zinc coated:15g/m²)
Class B: Hot dipped galvanized fixed knot joint fencing(zinc coated:30-50g/m²)
Class C: Heavy hot dipped galvanized fixed knot joint fencing(zinc coated:220-280g/m²)
3. Technical parameters:

Wire diameter and tensile strength: horizontal wires: diameter 2.5 mm, tensile strength 1100-1300N/mm²
vertical wires: diameter 2.5 mm, tensile strength 600-850N/mm²
knot wires: diameter 2.2 mm, tensile strength 400-525N/mm²

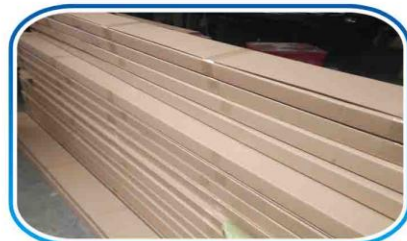
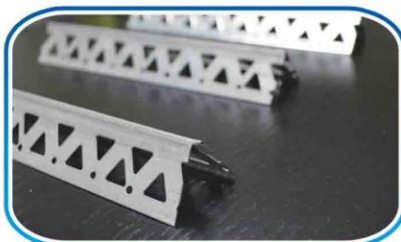
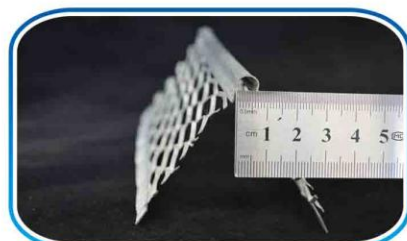
Product name	Zinc Coated Fixed Knot Woven Wire Fence Deer Fence		
Material	Galvanized metal wire		
Wire diameter	2.0mm(stock), others for production	Wire Gauge:1.9-3.5mm	Edge wire diameter:1.8-2.5mm
Hole size	Vertical hole size:15cm (5-60cm)	Aperture:89-203mm	
Width	0.85-2.4m,1m(stock),others for production		
Length	10-300m,80m(stock),others for production		
Features	Stronger, Less Cost; Long Life And Faster Installation.		
Applications	Livestock Fence, Pasture , Wildlife Park, Zoo Etc		



Galvanized Corner Bead >>>

Angle bead have a smooth round nose bead with diamond mesh wings for the keying of plaster right up to the nose of the bead. On the outside is the finished edge which is where one side of your drywall knife runs on when you are applying drywall mud. The two flanges sit flat on your raw drywall. The diamond decoration along the length of the flange act as a keyway for holding the drywall mud to the drywall and the corner. This mesh insures a perfect bond and provides effective reinforcement where most needed. Straight edge nose is easy to install and permits plumb straight outside corners. Excellent protection for corridor corners exposed to traffic.

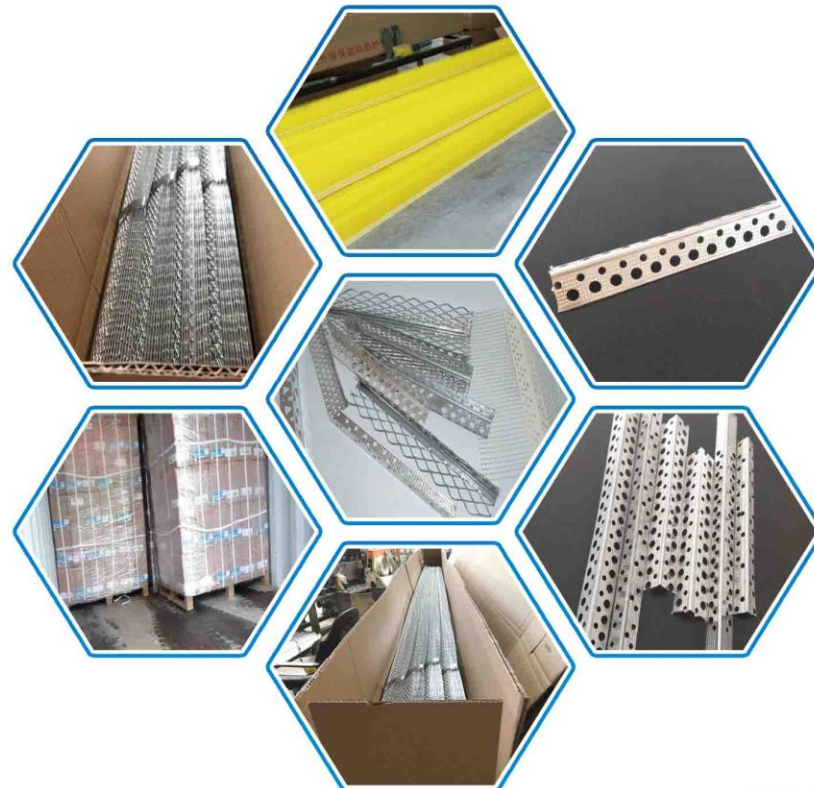
Thickness	Length	Aperture	Width	Material	PCS/CTN
0.3mm	2.4m-3m	5x15mm	30mm	Aluminium plate /Galv. plate / SS plate	50-100
0.4mm	2.4m-3m	10x20mm	40mm	Aluminium plate /Galv. plate / SS plate	50-100
0.45mm	2.4m-3m	10x20mm	50mm	Aluminium plate /Galv. plate / SS plate	50-100
0.5mm	2.4m-3m	10x30mm	60mm	Aluminium plate /Galv. plate / SS plate	50-100



Aluminum Corner Bead with Fiberglass Mesh >>>

Aluminum corner bead with fiberglass mesh is high quality aluminum corner bead. Aluminum Corner bead with fiberglass mesh wings can combined with plaster firmly, which can form a smooth, flat corner concise, meanwhile protecting the corner to prevent fragmentation, and easy construction, low cost, can save a lot of time.

Colors	Length	Width	Swing	Material	PCS/CTN
white/green/yellow	2m-3.5m	25*25mm	100*100mm	aluminum, fiberglass mesh	50-200
white/green/yellow	2m-3.5m	25*25mm	80*80mm		50-200
white/green/yellow	2m-3.5m	25*25mm	50*50mm		50-200
white/green/yellow	2m-3.5m	30*30mm	100*100mm		50-200
white/green/yellow	2m-3.5m	30*30mm	80*80mm		50-200
white/green/yellow	2m-3.5m	30*30mm	50*50mm		50-200



Decorative Wire Mesh >>>

1、 Perforated metal mesh

Material: Low carbon steel plate, aluminum plate, stainless steel plate, etc.

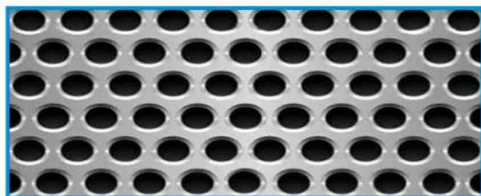
Hole Patterns include: Round, Rectangular, Square, Triangle, Diamond, Hexagonal, Cross, Long waist, etc.

Opening: 1–50mm Thickness: 0.3–10mm Length: 1–20mm Width: 1–2m

Surface treatment: hot-dipped galvanized, electro galvanized, pvc-coated, oiled, electrolytic polishing, oxidation.

Round Holes >>>

Round holes are the most popular shape and give you the widest selection of diameters, gauges, materials and sheet size options. Holes are in staggered row (most popular) or straight row patterns



Slotted Holes >>>

Slotted Holes are elongated holes with round or square ends. They are available from stock in either a side staggered or straight line pattern in plain steel. Others gauges, hole sizes, patterns and material are available by special order.



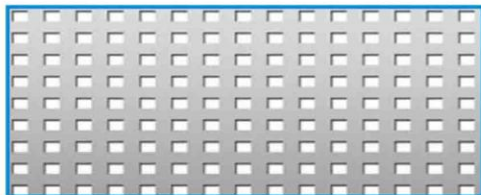
Hexagonal Holes >>>

Hexagonal Holes offer a considerable open area from 79–80% and are used primarily for architectural applications.



Square Holes >>>

Square Holes may be considered an attractive alternative to round holes in some applications.



Decorative Woven Mesh >>>



Cable Diameter: 2 mm × 1
Cable Pitch: 17.5 mm
Rod Diameter: 1.5 mm
Rod Pitch: 1.5 mm

Type:01



Cable Diameter: 2.0 mm × 1
Cable Pitch: 17.5 mm
Rod Diameter: 1.5 mm
Rod Pitch: 3.5 mm

Type:02



Warp Diameter: 2.0 mm × 2
Warp Pitch: 22.5 mm
Weft Diameter: 2.0 mm × 2
Weft Pitch: 22.5 mm

Type:03



Warp Diameter: 4 mm × 3
Warp Pitch: 4.95 mm
Weft Diameter: 2.7 mm × 1.6 mm
Weft Pitch: 2.7 mm

Type:04



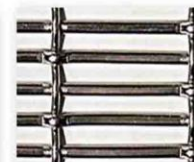
Warp Diameter: 2.26 mm × 3
Warp Pitch: 33 mm
Weft Diameter: 2.26 mm
Weft Pitch: 33 mm

Type:05



Material: 304 316 316L
Warp Diameter: 1.2 mm × 2
Warp Pitch: 17.5 mm
Weft Diameter: 2.0 mm
Weft Pitch: 4 mm

Type:06



Warp Diameter: 2 mm × 1
Warp Pitch: 32 mm
Weft Diameter: 2 mm
Weft Pitch: 4.5 mm

Type:07



Warp Diameter: 2.5 mm × 1
Warp Pitch: 15 mm
Weft Diameter: 2.5 mm
Weft Pitch: 15 mm

Type:08



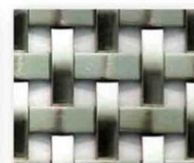
Warp Diameter: 3 mm × 1.5
Warp Pitch: 25.5 mm
Weft Diameter: 3.3 mm
Weft Pitch: 4.04 mm

Type:09



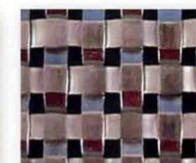
Warp Diameter: 1.2 mm × 2
Warp Pitch: 5 mm
Weft Diameter: 2.0 mm
Weft Pitch: 5 mm

Type:10



Warp Diameter: 1.5 mm × 6 mm
Warp Pitch: 12 mm
Weft Diameter: 1.5 mm × 6 mm
Weft Pitch: 12

Type:11



Warp Diameter: 3.4 mm × 1.1 mm
Warp Pitch: 6.6 mm
Weft Diameter: 3.4 mm × 1.1 mm
Weft Pitch: 6.6 mm

Type:12