



SHIJIAZHUANG CHENGEN TRADING CO., LTD

Email: sales@chengsenchina.com
TEL NO.: 0086 31180850577
MOB: 0086 13933063204
FAX: 0086 311 85867868
Website: www.hebeimetal.cn
www.chengsenchina.com
EXPORT PROFESSIONAL

石家庄成森贸易有限公司
SHIJIAZHUANG CHENGEN TRADING CO.,LTD

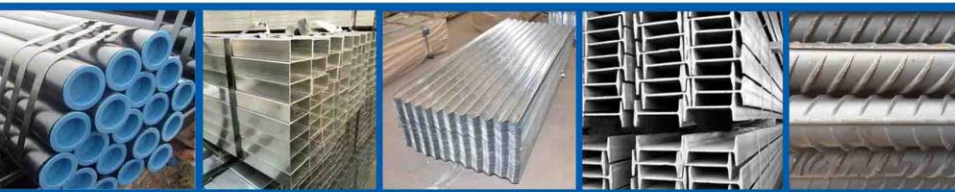
◀◀ Who We Are

CHENGSEN have 18 years export experiences, 25 years production experiences. 95% repeat orders, Alibaba 5 years Golden Supplier after so many years accumulation of industry and international trade practice,since then, we have achieved fast growth by expanding supply range,customer base and sourcing power continuously.

In 2019,we have sold about 200,000tons of various steel products to world market,say Gulf region(GCC),Caribbean nations,West and East Africa,Latin America,and Asia,and has been ranked within the top 100 trading company in HEBEI province.

Within our customers,we keep long term relationship with below esteemed international traders for sales of steel and other relevant products,especially in Europe,Caribbean nations,Latin America,West and East Africa,south east Asia.

At present,We have two departments to handling steel items and wire mesh items:



Steel Department Supply ▶▶▶

1. Carbon steel seamless pipe Size 1/4"-24", Thickness: SCH40, SCH80, STD, SCH160 as per API 5L/ASTM A53 /ASTM A106/DIN2440/DIN2448

2. Welded steel round pipe (black and galvanized) Size 1/2"-6", Thickness: 0.6mm-2.3mm as per BS1387:1985 / ASTM A53/DIN2440/DIN2448

3. Square pipe hollow section (black and galvanized) Size 10mm-200mm, Thickness 0.6mm - 2.5mm as per JIS G3466/ DIN EN10210/ASTM A500

4. Galvanized steel sheet: Width 600mm-1500mm, Thickness 0.11mm -4.5mm as per SGCC,SGCH,DX51D,CS B/C etc

5. Cold rolled steel sheet (full hard,soft) :Thickness:0.12-0.2mm,Width:600-1500mm as per Q195/Q235/ASTM A 36/ JIS SS400

6. Hot rolled steel sheet: Thickness1.5-19mm, Width:1000-1500mm, Length: 2000-3000mm as per ASTM A36 / JIS SS400

7. Chequer steel sheet (tear drop pattern) :Thickness:1.8-12mm Width:1219-1500mm Length: 2438-3000mm as per ASTM A36 / JIS SS400

8. Roofing sheet (GI, GL, PPGI, PPGL): Thickness 0.12mm-0.3mm, Width: 600mm-1000mm as per SGCC,SGCH,DX51D etc

9. GI, GL, PPGI, PPGL Thickness: 0.11-0.80mm,Width: 750mm-1250mm as per SGCC,SGCH,DX51D,CS B/C etc

10. Other steel products,including Flat bar, angle bar, U channel, H beams, I beams, IPEAA round bar, deformed steel bar etc.

Customer Photo ▶▶▶



2017 Yangon Fair



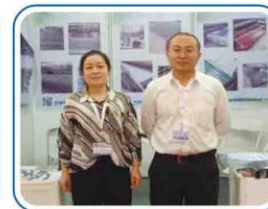
2017 in Myanmar



2017Myanmar exhibition



2018 in australia



2017Myanmar exhibition



2018 Australia Exhibition



2018 in Australia Exhibition



2018AUS



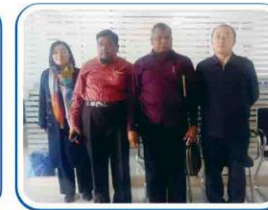
2018Australia customer visit us



2018缅甸myan



2019 Thailand



2019Myanmar customer visit

◀◀ Seamless Steel PIPE/Smls

OD.:1/4" ~ 24" /21.3 ~ 609.6mm WT:SCH30,SCH40,SCH80,SCH160 and etc.
 Spec:A53 Gr.A/B/C,A106 Gr B/C,API 5L PSL1 Gr.B,X42 ~ X70
 Length:6m or random length



Specification >>>

| Seamless Steel pipe | | | | | | | |
|---------------------|------------|------------|-------------------|------------|-------------------|------------|-------------------|
| N.D | OD (mm) | SCH40(6m) | | SCH80(6m) | | SCH160(6m) | |
| | | WT (mm) | Weight/pc (kg) | WT (mm) | Weight/pc (kg) | WT (mm) | Weight/pc (kg) |
| 1/4" | 13.7 | 2.24 | 3.79 | 3.02 | 4.8 | | |
| 3/8" | 17.1 | 2.31 | 5.04 | 3.2 | 6.6 | | |
| 1/2" | 21.3 | 2.77 | 7.62 | 3.73 | 9.72 | 4.78 | 11.7 |
| 3/4" | 26.7 | 2.87 | 10.14 | 3.91 | 13.2 | 5.56 | 17.4 |
| 1" | 33.4 | 3.38 | 15 | 4.55 | 19.44 | 6.35 | 25.44 |
| 1-1/4" | 42.2 | 3.56 | 20.34 | 4.85 | 26.82 | 6.35 | 33.66 |
| 1-1/2" | 48.3 | 3.68 | 24.3 | 5.08 | 32.46 | 7.14 | 43.5 |
| 2" | 60.3 | 3.91 | 32.64 | 5.54 | 44.88 | 8.74 | 66.66 |
| 2-1/2" | 73 | 5.16 | 51.78 | 7.01 | 68.46 | 9.53 | 89.52 |
| 3" | 88.9 | 5.49 | 67.74 | 7.62 | 91.62 | 11.13 | 128.1 |
| 3-1/2" | 101.6 | 5.74 | 81.42 | 8.08 | 111.78 | | |
| 4" | 114.3 | 6.02 | 96.42 | 8.56 | 133.92 | 13.49 | 201.24 |
| 5" | 141.3 | 6.55 | 130.62 | 9.53 | 185.82 | 15.88 | 294.66 |
| 6" | 168.3 | 7.11 | 169.56 | 10.97 | 255.36 | 18.26 | 405.36 |
| 8" | 219.1 | 8.18 | 255.3 | 12.7 | 387.84 | 23.01 | 667.62 |
| 10" | 273 | 9.27 | 361.86 | 15.09 | 576.06 | 28.58 | 1033.98 |
| 12" | 323.8 | 10.31 | 478.38 | 17.48 | 792.48 | 33.32 | 1432.56 |

Production Process >>>



◀◀ Black Welded PIPE

SQUARE AND RECTANGULAR HOLLOW SECTION(SHS/RHS)
 Size:10 × 10 ~ 400 × 400/20 × 10 ~ 500 × 300 × 1.8 ~ 18mm

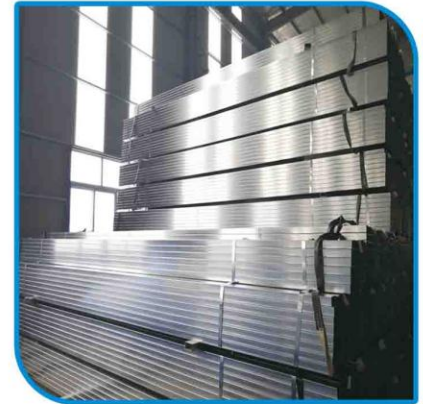


Specification >>>

| size (MM) | size (MM) | Wall thickness (MM) | length (M) | Min order PCS |
|--------------|--------------|------------------------|---------------|------------------|
| 20 | 20 | 0.8mm-2.0mm | 5.8/6 | 180 |
| 25 | 25 | 0.8mm-2.0mm | 5.8/6 | 120 |
| 30 | 30 | 0.8mm-2.0mm | 5.8/6 | 120 |
| 40 | 40 | 0.8mm-2.0mm | 5.8/6 | 72 |
| 50 | 50 | 0.8mm-2.0mm | 5.8/6 | 42 |
| 60 | 60 | 0.8mm-2.0mm | 5.8/6 | 42 |
| 80 | 80 | 0.8mm-2.0mm | 5.8/6 | 30 |
| 100 | 100 | 0.8mm-2.0mm | 5.8/6 | 20 |
| 20 | 30 | 0.8mm-2.0mm | 5.8/6 | 120 |
| 20 | 40 | 0.8mm-2.0mm | 5.8/6 | 135 |
| 25 | 50 | 0.8mm-2.0mm | 5.8/6 | 84 |
| 30 | 40 | 0.8mm-2.0mm | 5.8/6 | 90 |
| 30 | 50 | 0.8mm-2.0mm | 5.8/6 | 70 |
| 40 | 60 | 0.8mm-2.0mm | 5.8/6 | 48 |
| 40 | 80 | 0.8mm-2.0mm | 5.8/6 | 40 |
| 50 | 70 | 0.8mm-2.0mm | 5.8/6 | 48 |
| 50 | 100 | 0.8mm-2.0mm | 5.8/6 | 35 |

Galvanized Steel PIPE >>>

GALVANIZED STEEL PIPE (SQUARE AND RECTANGULAR)
 Size:15 × 15 ~ 60 × 60/20 × 10 ~ 80 × 40*0.6 ~ 2.5mm
 Spec:SGCC/Q195 for pre-galvanized type
 BS 1387,A53 for hot dipped galvanized type
 Length:5.8m/6m/11.8m/12m



Galvanized Round PIPE(Welded)



1. Unique packaging



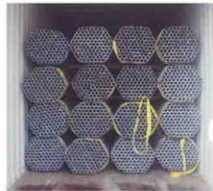
2. Delivery to the port



3. Professional transportation



4. Professional packing



5. Suitable carton size



6. Complete packing

60 ~ 80gsm(Pre-galvanized type)

or 200 ~ 300gsm (hot dipped galvanized type)

End:plain end or threaded and coupled

OD:16 ~ 60 WT:0.6 ~ 2.5mm

OD:20 ~ 273.1mm WT 1.5 ~ 12mm

Length:5.8/6/11.8/12mm

| Diameter | | OD | Thickness | | Big Thickness | |
|----------|-------|---------|--------------|-------------|---------------|-------------|
| mm | in | Size mm | Thickness mm | Weight kg/m | Thickness mm | Weight kg/m |
| 6 | 1/8 | 10 | 2 | 0.39 | 2.5 | 0.46 |
| 8 | 1/4 | 13.5 | 2.25 | 0.62 | 2.75 | 0.73 |
| 10 | 3/8 | 17 | 2.25 | 0.82 | 2.75 | 0.97 |
| 15 | 1/2 | 21.2 | 2.75 | 1.26 | 3.25 | 1.45 |
| 20 | 3/4 | 26.8 | 2.75 | 1.63 | 3.5 | 2.01 |
| 25 | 1 | 33.5 | 3.25 | 2.42 | 4 | 2.91 |
| 32 | 1 1/4 | 42.3 | 3.25 | 3.13 | 4 | 3.78 |
| 40 | 1 1/2 | 48 | 3.5 | 3.84 | 4.25 | 4.58 |
| 50 | 2 | 60 | 3.5 | 4.88 | 4.5 | 6.16 |
| 65 | 2 1/2 | 75.5 | 3.75 | 6.64 | 4.5 | 7.88 |
| 80 | 3 | 88.5 | 4 | 8.34 | 4.75 | 9.81 |
| 100 | 4 | 114 | 4 | 10.85 | 5 | 13.44 |
| 125 | 5 | 140 | 4.5 | 15.04 | 5.5 | 18.24 |
| 150 | 6 | 165 | 4.5 | 17.81 | 5.5 | 21.63 |

Galvanized Steel Sheet (GI Sheet)

Galvanized Steel sheets are produced through a process of metal coating which involves passing cold rolled coils through a kettle containing molten zinc. This process ensures adhesion of zinc to the surface of the steel sheet. The Zinc Layer provides excellent corrosion resistance and prolong service life.

Application: Hot dip galvanized products are widely used in household appliances, transport, container manufacturing, roofing, base material for re-painting, ducting and other construction related applications.



Specification

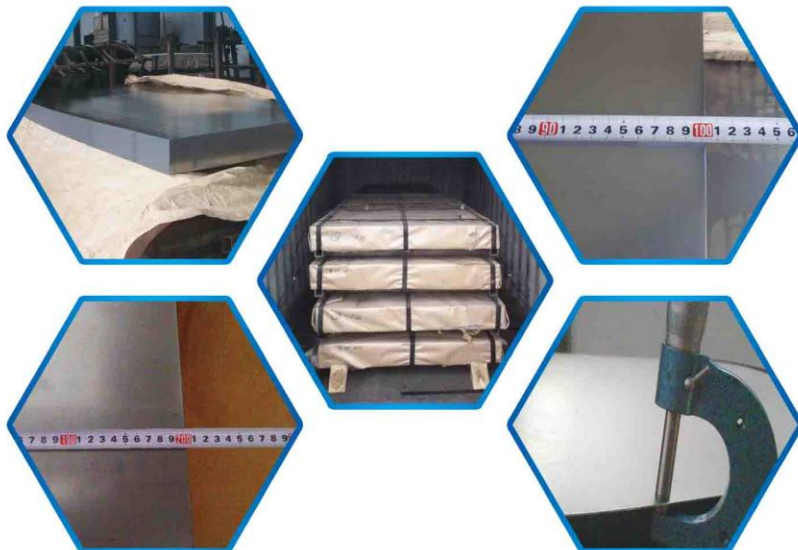
| | |
|---------------|----------------------------------------|
| Standard | JIS G3302, EN10327, ASTM A653/653M etc |
| Grade | SGCC, SGCH, DX51D, CS B/C and etc |
| Size range | 0.11mm ~ 4.5 x 600 ~ 1500mm |
| Zinc coating | 40--275g/m2 |
| Surface | Chromated/Un-oiled Dry |
| Spangle | Regular/zero spangle/Minimized |
| Pallet weight | 1--3Mtons |

◀◀ Cold Rolled Steel Sheet ▶▶

Cold rolled steel sheets—continuously black annealed(CRB)

Slightly Oiled,Q195 or SPCC grade,HRB60+/-5

Black-Finish,Nitrogen Continuous Annealed



Specification ▶▶▶

| | |
|---------------------|----------------------------------------|
| Standard | JIS G3141, GB/T5213-2008, EN10130:2006 |
| Size range | 0.12mm ~ 1.8mm x 600 ~ 1250mm |
| Surface | Black Annealed |
| Width Tolerance | -0/+20mm(Aiming -0/+10m) |
| Thickness Tolerance | +0/-0.05mm |
| Pallet weight | 1--3Mtons |

Hot Rolled Steel Sheet ▶▶▶

Spec:GB/T912, JIS 3106, EN10051

Grade:Q195/SAE1008/SPHC/Q235B/SS400/A36/S235JR/Q275B/S275JR/Q345B/S355JR

Thickness: 1.5-20mm

Common Size: 1000x2000mm 1200x2400mm 1219x2438mm 1220x2440mm
1250x2500mm 1500x3000mm



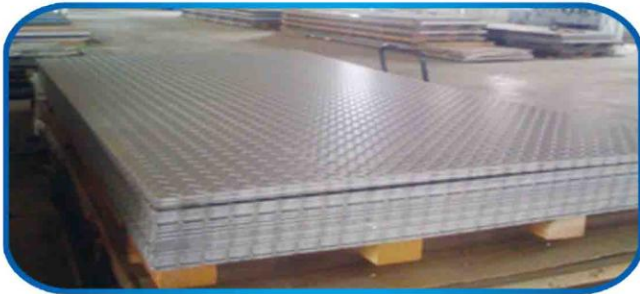
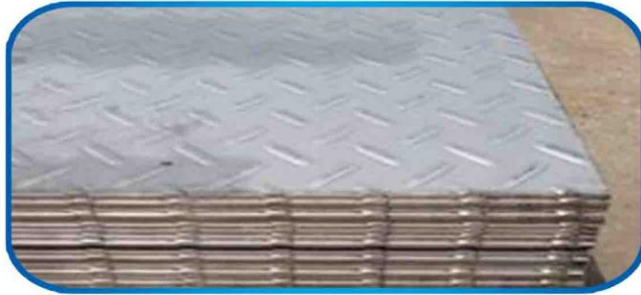
Hot Rolled Chequer Sheet

Pattern: tear drop

Grade: Q235B/A36/SS400/Q275B/S275JR

Thickness: 1.2-12mm

Common Size: 1219x2438mm 1220x2440mm 1250x2500mm 1500x3000mm



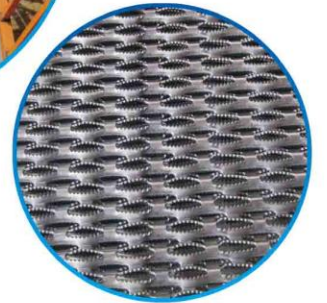
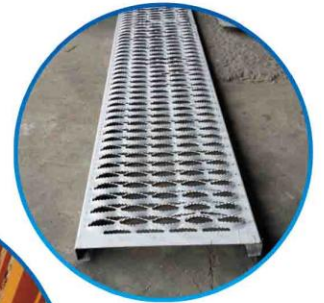
ANTI-SKID Sheet

Thickness: 1-3mm (customized according to customer requirements)

Hole shape: crocodile mouth (crocodile mouth from the drum anti-skid plate also called crocodile from the drum anti-skid plate), round hole, drum type, etc. (customized according to customer requirements)

Features: good anti-slip effect, long service life and beautiful appearance.

Uses: Because the drum anti-skid board has good anti-slip and aesthetics, it has a wide range of uses in industrial plants, production workshops, transportation facilities, etc., used in aisles, workshops and venues in public places. It reduces the inconvenience caused by the slippery road surface, protects the personal safety of the personnel, and brings convenience to the construction. Effective protection in special environments.



◀◀ GI Coils

Galvanized steel coils are produced through a process of metal coating which involves passing cold rolled coils through a kettle containing molten zinc. This process ensures adhesion of zinc to the surface of the steel sheet. The Zinc Layer provides excellent corrosion resistance and prolong service life.



Specification >>>

| | |
|--------------|----------------------------------------|
| Standard | JIS G3302, EN10327, ASTM A653/653M etc |
| Grade | SGCC, SGCH, DX51D, CS B/C and etc |
| Size range | 0.12mm ~ 4.5 × 600 ~ 1250mm |
| Zinc coating | 40--275g/m ² |
| Coil ID | 508/610mm |
| Surface | Chromated/Un-oiled Dry |
| Spangle | Regular/zero spangle/Minimized |
| Coil weight | 3--12mt |

PRE-Painted >>> Galvanized Steel Coils

PPGI is pre-painted steel, has good mechanical strength, good formability, good decorative and corrosion resistance

Application: Widely used in construction, home appliances, furniture, utilities and transport

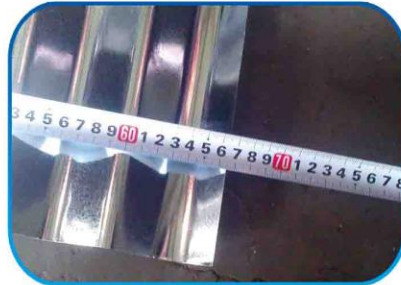


Specification >>>

| | |
|----------------|---------------------------------------------------------------------------------------------------------------------------|
| Standard | JIS G3302, EN10326, ASTM A653/653M etc |
| Grade | SGCC, SGCH, DX51D, CS B/C and etc |
| Thickness | 0.11-0.80mm |
| Width | 750-1250mm |
| Inner Diameter | 508/610mm |
| Coil Weight | 3-8 Tons |
| Color code | RAL or Pantone color code |
| Coating | Base metal: Z40-275 Top coating: 15-25um PE Back coating: 5-10um epoxy PE protective film available upon request |

◀◀ GI Corrugated Roofing Sheet

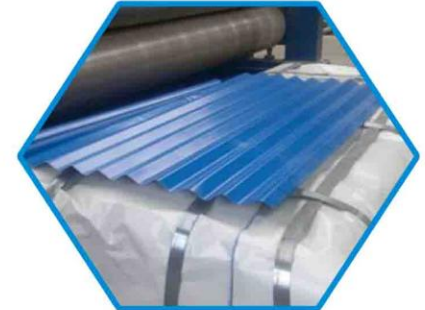
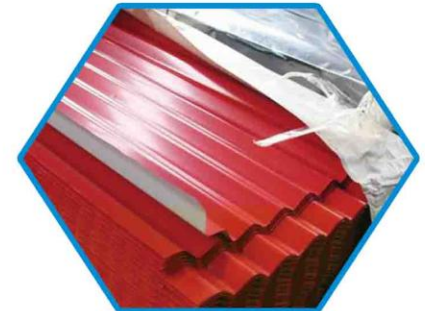
| | |
|-------------------|-----------------------------------------------------------------------------------------------------------------------------------------------------------------------------------------------------------------------------------------------------------------------------|
| Nominal Thickness | 0.18mm-0.8mm |
| Nominal Width | 600-1050mm |
| Length | Any Length by Required |
| Spangle | Regular Spangle, Mini Spangle |
| Substrate steel | Galvanized/ Glvalume Steel Sheet |
| Types | Commercial / Drawing / Deep Drawing / Structural quality |
| Coating | Z30-Z180 AZ30-AZ100 |
| Spangle State | Regular spangle, small spangle, big spangle, non-spangle |
| Surface treatment | chromed / oiled/ slightly oiled/ dry/ anti-fingerprint etc |
| Corrugation | Raw material 762mm to 665mm(after corrugated) and 9 waves Raw material 914mm to 800mm-890mm(after corrugated) and 11 waves Raw material 1000mm to 900mm or 920mm(after corrugated) and 12 or 14 waves Raw material 1200mm to 1070mm(after corrugated) and 17 waves |



Color Coated ▶▶▶ Corrugated Roofing Sheet

Thickness:0.15mm to 1.0mm
 Width:610-1000mm(after corrugation);
 Raw material width 762mm to 665mm(after corrugated)
 Raw material width 914mm to 800mm(after corrugated)
 Raw material width 1000mm to 900mm(after corrugated)
 Raw material width 1200mm to 1000mm(after corrugated)
 Wave height:17-18mm
 Wave distance/pitch: about 76mm
 number of waves:9-12

Our products are widely used in such fields as construction, transportation, chemical engineering, household appliance, lighting and building materials, having a promising market prospect. Till now, we have supplied quality products to customers in West Europe, South America, the Middle East and Africa.



◀◀◀ Angle And Channel Bar

GRADE:Q235 OR A36 OR SS400 OR S235JR *Q345 OR A572 GR.50OR

S355JR GRADE AVAILABLE FOR PARTIAL SIZE

Equal angle bar: 20 × 20 × 2 ~ 200 × 200 × 20mm

Un equal angle bar: 75 × 50 × 6 ~ 200 × 125 × 18mm

JIS channel bar: 75 × 40 × 3.8 ~ 150 × 75 × 9mm



I/H Beam And Flat Bar ▶▶▶

GRADE:A36 OR SS400 OR Q235

H beam: 100 × 100 ~ 700 × 300mm

IPE/IPEAA/IPE4A: 80/100/120/140/160/180/200

Flat bar(slit type): 18 ~ 300mm*3 ~ 12mm Flat bar(hot rolled): 16 ~ 150mm*6 ~ 30mm

